

WE CARE ABOUT FOOTBALL

A photograph of stadium floodlights, showing a grid of numerous bright lights mounted on a metal structure against a clear blue sky.

UEFA Stadium Infrastructure Regulations

Edition 2006

UEFA STADIUM INFRASTRUCTURE REGULATIONS

Contents

Preamble	1
I General provisions	1
Article 1 – Scope of application	1
Article 2 – Connection with the competition regulations	1
Article 3 – Definition of terms	1
II Structural criteria	2
<i>Chapter 1: Areas relating to players and officials</i>	<i>2</i>
Article 4 – Field of play	2
Article 5 – Warm-up area	2
Article 6 – Goals and spare goal	3
Article 7 – Playing surface	3
Article 8 – Substitutes' benches	3
Article 9 – Flags	3
Article 10 – Dressing-rooms	4
Article 11 – Delegate's room	4
Article 12 – First aid and treatment facilities for players and officials	4
Article 13 – Doping control station	4
Article 14 – Floodlighting	5
Article 15 – Parking areas	5
<i>Chapter 2: Spectator-related areas</i>	<i>6</i>
Article 16 – Stands and spectator facilities	6
Article 17 – Visiting supporters	6
Article 18 – Public access and egress	6
Article 19 – Emergency lighting system	7
Article 20 – Spectator capacity	7
Article 21 – Public address system	7
Article 22 – Sanitary facilities for spectators	7
Article 23 – First aid facilities for spectators	8
Article 24 – Facilities for spectators with disabilities	8
Article 25 – Control room	8
Article 26 – Closed-circuit television system	8
Article 27 – VIP and hospitality areas	9

<i>Chapter 3: Media-related areas</i>	9
Article 28 – Media working area	9
Article 29 – Camera positions	10
Article 30 – Press box	10
Article 31 – TV and radio commentary positions	11
Article 32 – TV studios	11
Article 33 – OB van area	11
Article 34 – Press conference room	12
III Final provisions	12
Article 35 – Authoritative text	12
Article 36 – Annexes	12
Article 37 – Disciplinary procedures	12
Article 38 – Adoption and entry into force	12
Annex I: Plan of doping control station	13
Annex II: Calculation of the floodlighting average illuminance	14

Preamble

Based on Article 50(1) of the UEFA Statutes, the following regulations have been adopted:

I General provisions

Article 1 – Scope of application

- 1 These regulations govern the structural criteria to be fulfilled by a stadium in order to be classified as UEFA category 1, 2, 3 or elite (in ascending rank order).
- 2 Unless stipulated otherwise, the criteria defined in these regulations are applicable for all UEFA stadium categories.

Article 2 – Connection with the competition regulations

The relevant UEFA regulations governing a competition to be played in a stadium:

- a) specify the category of stadium required for all matches in the competition concerned;
- b) set out the responsibilities for monitoring compliance with the criteria for the required category;
- c) may specify conditions under which the UEFA administration may grant an exception to a specific structural criterion for the required stadium category.

Article 3 – Definition of terms

- 1 For the purpose of these regulations, the following definitions apply:
 1. Closed-circuit television system: fixed cameras with pan and tilt facilities for monitoring spectators, stadium approaches and entrances, and all viewing areas within the stadium.
 2. Control room: room reserved for the persons who have overall responsibility for all match-related safety and security matters, namely the chief police officer, the stadium security officer and their staff.
 3. Delegate's room: room reserved for the official UEFA delegate and referee observer.

4. Mixed zone: area between the dressing-rooms and the parking area reserved for the team buses where accredited written press, radio and TV reporters can interview players after the match.
 5. OB van area: secure area for parking TV companies' outside broadcast vans.
 6. Public address system: an electronic system of loudspeakers capable of communicating clear messages to all spectators instantaneously.
 7. Temporary stands: seating which, by virtue of its material, design and construction, is clearly intended for use for a very limited period.
- 2 In these regulations, the use of the masculine form refers equally to the feminine.

II Structural criteria

Chapter 1: Areas relating to players and officials

Article 4 – *Field of play*

- 1 The field of play must be smooth and level.
- 2 It must be equipped with a drainage system so that it cannot become unplayable due to flooding.
- 3 It must comply with the following dimensions and requirements:

Stadium category	Length	Width	Additional requirements
1	100 - 110 m	64 - 75 m	
2			
3	105 m	68 m	
Elite			

Article 5 – *Warm-up area*

A warm-up area for substitutes must be made available along the touchlines or behind the advertising boards behind the goal.

Article 6 – Goals and spare goal

- 1 Goalposts and crossbars must be made out of aluminium or similar material and must be round or elliptical. Moreover, they must be in compliance with the Laws of the Game as promulgated by the International Football Association Board (IFAB), which means, in particular, that:
 - a) the distance between the posts must be 7.32m;
 - b) the distance from the lower edge of the crossbar to the ground must be 2.44m;
 - c) the goalposts and crossbars must be white;
 - d) they must not pose any danger to players.
- 2 A spare goal, which can be easily installed if the circumstances so require, must be available within the stadium.

Article 7 – Playing surface

- 1 The stadium must be equipped with either a natural playing surface or artificial turf.
- 2 Artificial turf must meet all of the following conditions:
 - a) it must have been granted the required FIFA licence, which can only be delivered after the turf in question has been tested by a FIFA-accredited laboratory as meeting the FIFA quality standards for artificial turf;
 - b) it must meet all the requirements of the national legislation in force;
 - c) its surface must be green.

Article 8 – Substitutes' benches

The stadium must be equipped with two covered benches at pitch level, each with seating room for at least 13 people and positioned at least five metres from the touchline.

Article 9 – Flags

The stadium must be equipped with a minimum of five flagpoles or other kind of supports allowing five flags to be flown at the stadium.

Article 10 – Dressing-rooms

- 1 A stadium must be equipped with:
 - a) a dressing-room for each team with a minimum of five showers, three individual seated toilets, seating room for at least 25 persons, one massage table and one tactical board;
 - b) a referees' dressing-room with a minimum of one shower, one individual seated toilet, five seats and a desk.
- 2 A stadium must guarantee direct, private and protected access for both teams and the referees from their dressing-rooms to the playing area and ensure their safe arrival at/departure from the stadium.

Article 11 – Delegate's room

The stadium must be equipped with a delegate's room with access to communication facilities such as a phone and fax, located nearby, and with easy access to the team and referee dressing-rooms.

Article 12 – First aid and treatment facilities for players and officials

The stadium must be equipped with a dedicated room for first aid and medical treatment of players and officials.

Article 13 – Doping control station

- 1 The stadium must be equipped with a dedicated doping control station which meets the requirements set out in Annex I of these regulations.
- 2 The doping control station must be near the team dressing-rooms and inaccessible to the public and the media.
- 3 It must be at least 20m² and comprise a waiting room, testing room and toilet area, all adjoining.
- 4 The waiting room forms part of or is immediately adjacent to the testing room (a partition dividing the two areas is also acceptable). It must contain sufficient seating for eight people, clothes-hanging facilities or lockers, as well as a refrigerator.
- 5 The testing room must contain: one table, four chairs, a sink with running water, a lockable cabinet, and a toilet (adjacent to the room or in the room itself).
- 6 The toilet area must be within the testing room or immediately next to it and with direct private access to the testing room. It must contain a seated toilet as well as a sink with running water.

Article 14 – Floodlighting

- 1 The stadium must be equipped with a floodlighting system maintaining the following minimum and/or maximum average illuminance (calculated according to Annex II):

Stadium category	in $E_v(lx)$ towards fixed cameras	in $E_v(lx)$ towards mobile cameras
1	800 - 1400	500 - 1000
2		
3	1200 - 1400	800 - 1000
Elite	min. 1400	min. 1000

- 2 In order to ensure that the match can proceed in the event of a power failure, an independent back-up power supply system meeting the following requirements must be available:

Stadium category	Requirement
1	
2	Able to provide at least two-thirds of the equivalent light intensity values.
3	Able to provide the full equivalent light intensity values instantaneously and without interruption.
Elite	

Article 15 – Parking areas

- 1 The stadium must provide parking space for a minimum of two buses and ten cars for teams and officials.
- 2 In addition, the following requirements must be met:

Stadium category	Minimum of parking spaces for VIPs in a safe and secure area	Additional requirement
1	20	
2	100	
3	150	Parking space for a minimum of 400 buses in the vicinity of the stadium.
Elite		

Chapter 2: Spectator-related areas

Article 16 – *Stands and spectator facilities*

- 1 Seats for spectators must be individual, fixed (e.g. to the floor), separated from one another, shaped, numbered, made of an unbreakable and non-flammable material and have a backrest of a minimum height of 30 cm when measured from the seat.
- 2 The use of temporary stands is prohibited.
- 3 The stadium must be equipped with refreshment and catering facilities for all spectators in every sector of the stadium.
- 4 In addition, the stands must meet the following requirements:

Stadium category	Requirement
1	Matches can be played before standing spectators.
2	Matches can only be played before seated spectators, with any sector for standing spectators kept closed (bench seating of any description is prohibited and will be regarded as standing accommodation).
3	
Elite	

Article 17 – *Visiting supporters*

At least five percent of the total stadium capacity must be available exclusively for visiting supporters in a segregated area of the stadium.

Article 18 – *Public access and egress*

- 1 Entry gates and/or turnstiles must be designed in such a way as to avoid congestion and ensure the smooth flow of the crowd.
- 2 All public passageways and stairways in the spectator areas must be painted in a bright colour, as must all gates leading from the spectator areas into the playing area, and all exit doors and gates leading out of the stadium.
- 3 All exit doors and gates in the stadium, and all gates leading from the spectator areas into the playing area, must:
 - a) be fitted with a locking device which may be operated simply and quickly by anyone from the inside in the case of exit doors and gates or from either side in the case of gates leading into the playing area;
 - b) be designed to remain unlocked while spectators are in the stadium.

- 4 Approaches to the stadium must be adequately signposted (for example by means of pictograms) to guide spectators to their sectors, and all turnstiles, entry and exit gates and doors must be operational and similarly clearly indicated by signs which are universally understood.
- 5 In addition, a stadium in the elite category must be equipped with a modern electronic access control system delivering real time data analysis and preventing the use of counterfeit tickets.

Article 19 – Emergency lighting system

For the purpose of ensuring safety and guiding spectators, a stadium must be equipped with an emergency lighting system approved by the competent local authorities for use in the event of a general lighting failure in all parts of the stadium to which the public has access, including all exit and evacuation routes.

Article 20 – Spectator capacity

In terms of spectator capacity, a stadium must meet the following requirement:

Stadium category	Requirement
1	Provide a grandstand with at least 200 seats.
2	Provide at least 3,000 seats.
3	
Elite	Provide at least 30,000 seats, including a minimum of 22,500 covered ones.

Article 21 – Public address system

- 1 A stadium must be equipped with a public address system.
- 2 The public address system must not be vulnerable to failure of the main power supply.
- 3 In addition, a stadium in the elite category must be equipped with a giant screen allowing messages to be delivered to the public.

Article 22 – Sanitary facilities for spectators

Seated toilets for all spectators of both sexes, as well as urinals, must be made available in each sector of the stadium, with a ratio of one seated toilet per 200 spectators and one urinal per 125 spectators.

Article 23 – First aid facilities for spectators

- 1 Fully-equipped first-aid facilities approved by the competent local authorities must be made available for spectators in each sector of the stadium.
- 2 These facilities must be clearly identified and access to them must be clearly signposted.

Article 24 – Facilities for spectators with disabilities

- 1 A stadium must have dedicated access and seats for spectators with disabilities and their helpers.
- 2 In addition, persons with disabilities must have dedicated sanitary facilities as well as refreshment and catering facilities in the vicinity of the sector where they are seated.

Article 25 – Control room

A stadium must meet the following requirement:

Stadium category	Requirement
1	
2	Have a control room ensuring an overall view of the inside of the stadium as well as equipped with communication facilities.
3	
Elite	

Article 26 – Closed-circuit television system

A stadium must meet the following requirements:

Stadium category	Requirement	Additional requirement
1		
2		
3	Equipped both inside and outside with a permanent closed-circuit television system.	The closed-circuit television system must have the in-built facility to take still pictures and have colour monitors in the control room.
Elite		

Article 27 – VIP and hospitality areas

- 1 A stadium must be equipped with at least the following minimum number of VIP seats and have a single exclusive hospitality area of the following minimum dimensions:

Stadium category	Minimum number of VIP seats	Minimum number of VIP seats reserved for the visiting team	Single exclusive hospitality area
1	50	20	400 m ²
2	400	200	
3	750		
Elite	1500		

- 2 The VIP seats must be situated in the grandstand and as close to the halfway line as possible, between the two penalty areas.

Chapter 3: Media-related areas

Article 28 – Media working area

- 1 At least one room must be provided for media representatives, equipped with desks and access to communication facilities.
- 2 This room must have the following minimum dimensions:

Stadium category	Size of the room
1	50 m ²
2	100 m ²
3	150 m ²
Elite	

Article 29 – Camera positions

- 1 One main camera platform must be provided in the grandstand. It must be centrally situated and at a height above the pitch which guarantees optimum picture quality.
- 2 The main camera position must be exactly in line with the halfway line and be at a height which forms an angle of 15-20° from the horizontal plane to the centre spot.
- 3 The platform for the main camera must have the following minimum dimensions:

Stadium category	Size of the platform
1	4 m ²
2	6 m ²
3	10 m ²
Elite	12 m ²

Article 30 – Press box

- 1 A stadium must have a press box for media representatives that meets the following requirements:

Stadium category	Minimum number of covered seats	Minimum number of covered seats equipped with desks	Position of the press box
1	20	5	
2	50	25	
3	100	50	
Elite	200	100	In a central position in the grandstand (in the vicinity of the team dressing-rooms and the various media facilities).

- 2 All seats with desks must be equipped with a power supply and phone/modem connections.
- 3 The desks must be big enough to accommodate a laptop computer and a note pad.

Article 31 – TV and radio commentary positions

- 1 A stadium must have the following minimum number of covered TV and radio commentary positions:

Stadium category	Minimum number
1	2
2	5
3	25
Elite	40

- 2 Each commentary position must have at least three seats.

Article 32 – TV studios

A stadium must be equipped with TV studios meeting the following requirements:

Stadium category	Number required	Size required	Additional requirements
1	1		
2	2	5m long x 5m wide x 2.3m high	
3			Including a presentation studio with view of the pitch. Adequate space for a secured mixed zone.
Elite	3		

Article 33 – OB van area

A stadium must have an OB van area meeting the following requirements:

Stadium category	Location	Surface dimension
1		at least 100 m ²
2		at least 200 m ²
3		at least 1,000 m ²
Elite	Located on the same side of the stadium as the main camera.	at least 2,000 m ²

Article 34 – Press conference room

A stadium must fulfil the following requirements:

Stadium category	Requirement	Minimum number of seats
1	Part of the media working area can be used as press conference room.	
2	At least one press conference room must be made available, equipped with a desk, camera platform, podium, split box, sound system and chairs.	50
3		75
Elite		100

III Final provisions

Article 35 – Authoritative text

If there is any discrepancy in the interpretation of the English, French or German versions of these regulations, the English version shall prevail.

Article 36 – Annexes

All annexes to the present regulations form an integral part thereof.

Article 37 – Disciplinary procedures

Any breach of these regulations may be penalised by UEFA in accordance with the UEFA Disciplinary Regulations.

Article 38 – Adoption and entry into force

- 1 These regulations were adopted by the UEFA Executive Committee at its meeting on 5 October 2006.
- 2 They come into force on 1 June 2007.

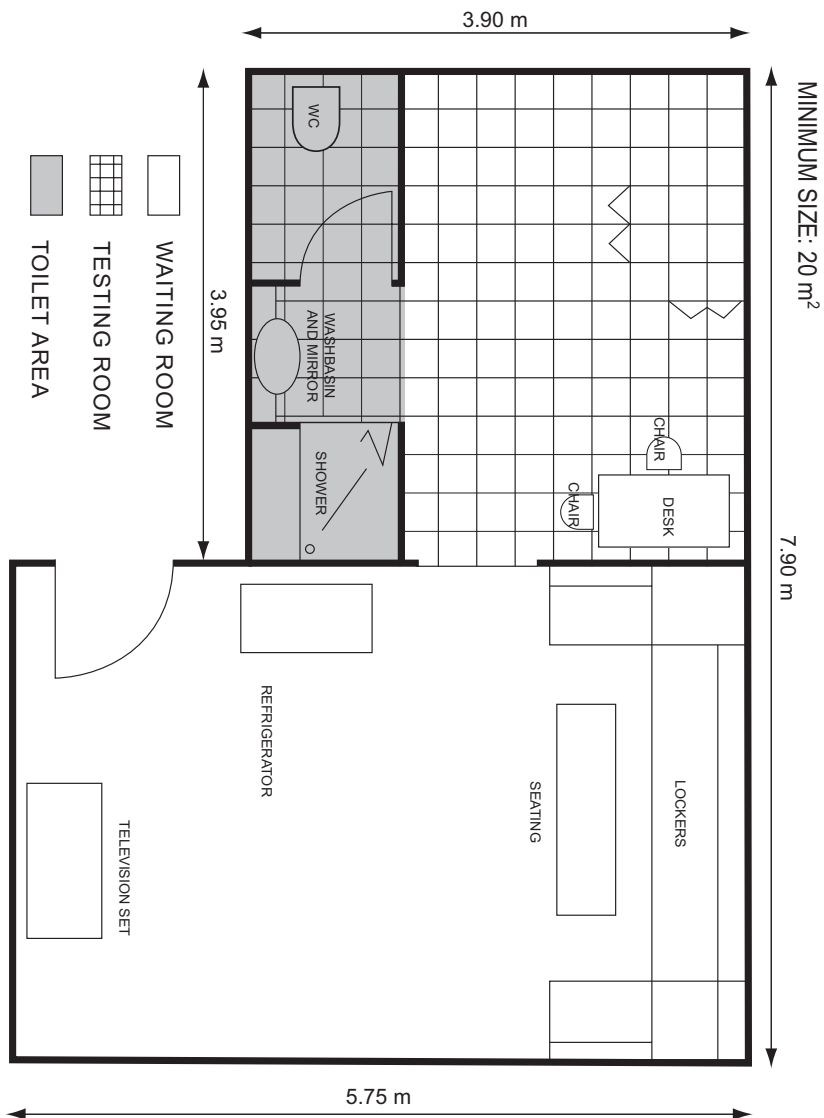
For the UEFA Executive Committee:

Lennart Johansson President
Lars-Christer Olsson Chief Executive

Nyon, October 2006

Annex I: Plan of doping control station

(see Article 13(1))



Annex II: Calculation of the floodlighting average illuminance

(see Article 14(1))

The floodlighting average illuminance corresponds to the vertical illuminance with a uniformity of $E_{\min}/E_{\max} \geq 0,4$ et $E_{\min}/E_{\text{med}} \geq 0,6$.

For this calculation, the following abbreviations apply:

Symbol or abbreviation	Term	Explanation
E_{\min}/E_{\max} E_{\min}/E_{med}	Illuminance Uniformity	Ratios describing how evenly light is distributed over the pitch surface.
E	Illuminance	The quantity of light falling (incident) on a surface at a specific point, expressed in lux.
E_v	Vertical illuminance	Illuminance on a vertical plane 1.5m above the pitch (orientation towards a specific camera).
I_x	Lux	The unit of illuminance (lumen per square meter) incident on a pitch surface. $1 \text{ lx} = 1 \text{ lm/m}^2$.
Lm	Lumen	The spectral power distribution of a lamp weighted by the eye sensitivity curve.

UEFA
Route de Genève 46
CH-1260 Nyon 2
Switzerland
Telephone +41 848 00 27 27
Telefax +41 848 01 27 27
uefa.com

Union des associations
européennes de football

